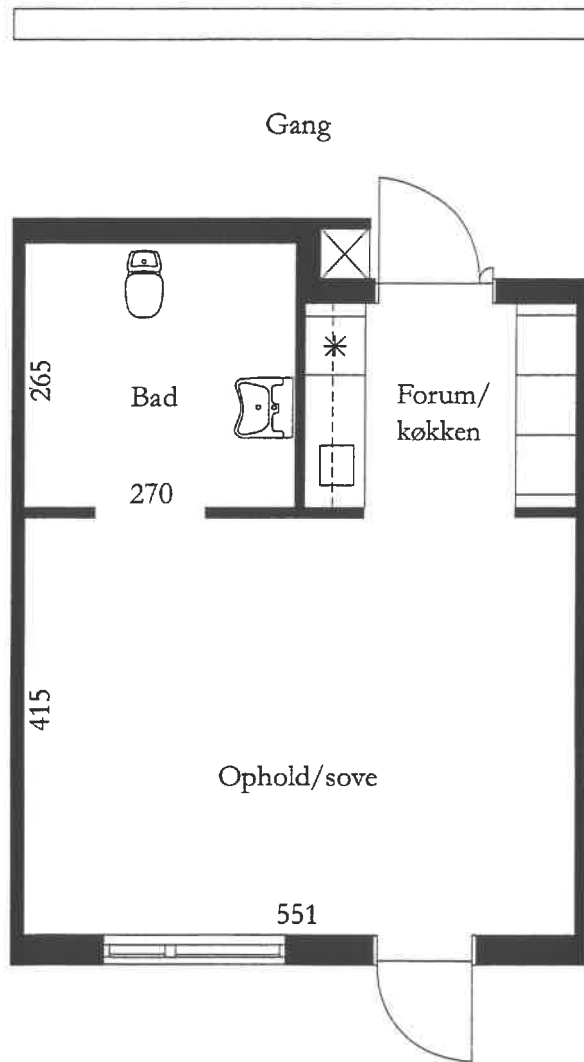


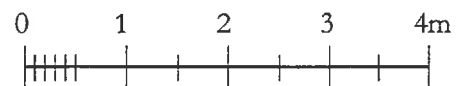
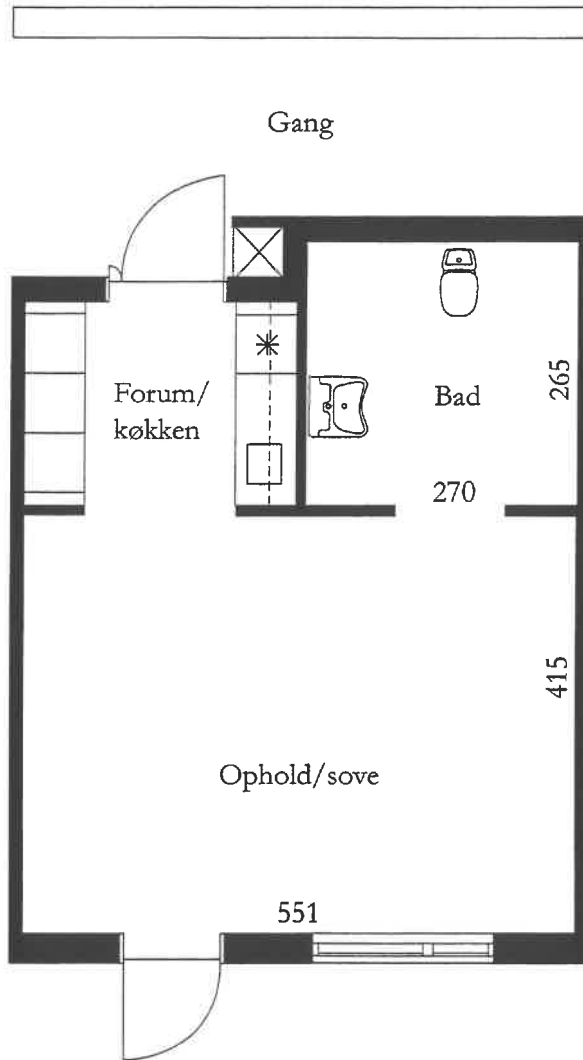
# TYPE ÆL 110a

1 rum 67,60 m<sup>2</sup>  
(Netto 36,18 m<sup>2</sup>)



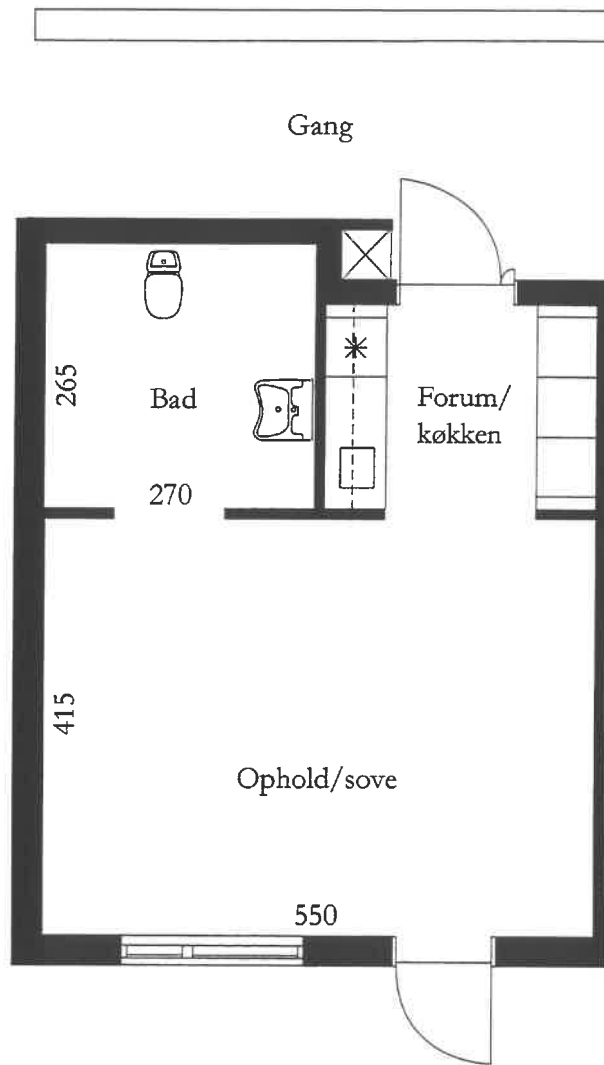
# TYPE ÆL 110b

1 rum 67,60 m<sup>2</sup>  
(Netto 36,18 m<sup>2</sup>)



# TYPE ÆL 110c

1 rum 68,80 m<sup>2</sup>  
(Netto 36,18 m<sup>2</sup>)



# TYPE ÆL 110d

1 rum 69,10 m<sup>2</sup>  
(Netto 36,18 m<sup>2</sup>)

